

Paw Prints

THE OFFICIAL NEWSLETTER FOR GUIDE DOGS SA/NT AUTUMN 2017

Guide
Dogs

SA/NT



With your support,
Pippa is changing lives.
Thank you.

Message from the Chairman

Welcome to 2017 - a year in which Guide Dogs celebrates 60 years of remarkable history and changing lives.

I can't tell you how excited I am to welcome you all into the New Year, a very exciting year indeed for Guide Dogs as we celebrate 60 years of changing lives.

Sixty years ago, it was illegal to even have dogs in public places. There was a need for change in community expectations and public norms. There was little support for the Guide Dog model, which had been successfully proven overseas.

But, with your continued support, Guide Dogs is leading the way in using our expertise with dogs and in sensory service provision, to enhance the quality of life of people living with disability.

We owe so much to our early pioneers and especially to Frank Beauchamp and the Apex Club of Adelaide, who led the way to change. It was their vision and dedication that ensured Guide Dogs began on a firm foundation.

In November 1957, the Apex Club of Adelaide issued an invitation to potential supporters to meet with a view to establishing a State Association. The following month, the Association was formed, with a bank account being opened from a £1 levy subscribed by each of the 10 members. So began a hard-fought journey towards outstanding success.

Thanks to the early work of these dedicated few, we now have a long and exemplary history in training and placing Guide Dogs and supporting people with vision and/or hearing impairment. **Your generosity has contributed to the achievement of many firsts, including the pioneering Autism Assistance Dog program, an area of massive need, now rolling out nationally.**

You can be proud of the part you have played in introducing this program, which has changed countless lives.

There are several celebrations planned to mark the significance of 2017 and it seems especially fitting that this is the year we launch the innovative **Beau's Pet Hotel**. The slab is down, the frame is up and we are making fantastic progress towards opening in August. With Guide Dogs behind this initiative - Australia's Most Trusted Charity four years in a row - you can rest assured that Beau's will offer the very best of care and attention for your beloved pet.

Beau's is a major investment in South Australia. Not only is this project creating around 60 much-needed jobs; it is a vote of confidence in the future of our State and the future of Guide Dogs.



Joe Thorp, Chairman of the Board

We are grateful for the fine leadership of our former CEO, Kate Thiele, who completed her tenure at Guide Dogs in December. Over seven years, Kate transformed the organisation, creating a highly trained, engaged and capable workforce, expanding programs and ensuring Guide Dogs was sustainable for the future. Kate was a brilliant ambassador and helped to make Guide Dogs a place where people wanted to work and volunteer. The Board is grateful for her service and wish her all the best for the future.

Lastly, on behalf of the Board, Acting CEO Garry Peschel and the team, I'd like to take this opportunity to express our thanks to our volunteers and supporters. We simply could not operate without you. Our 60 years of service is a tribute to your dedication and contribution, too. **Thank you.**



BEAU'S™

PERSONALISED PET HOTEL



Doggy Day-Care - Dog & Cat Accommodation
Grooming Service - Education & Training

Now taking bookings!

Beau's Personalised Pet Hotel opens the doors on 28 August 2017. Enjoy your holiday with peace of mind knowing that your precious pet is being cared for by the best in the business.

To book call (08) 8115 6080
or book online at beaus.org.au



All profits from Beau's will be directed back to Guide Dogs' core business to provide more services to South Aussies living with disability.

Meet your team

Business Development Unit

Have you ever wondered...who is on the other end of the phone or who writes those inspiring letters and cute Pupdates?

Introducing the Business Development team.

How does the BD team fit into the organisation?

The Business Development Unit (BDU) includes Fundraising and Marketing. **The best way to describe our team is as the engine in a car.** There are many parts to a car; the wheels, the doors, seats, radio. They can all do their job independently - the wheels can turn, the doors can open and the radio can play music. But without the engine, none of these parts have the ability to work together to drive you to where you need to be. BDU is like the engine; raising money (fundraising) and promoting services (marketing) so the service departments can help people living with disability.

BDU is made up of people in the fundraising team; Paul, Tassy, Alix, Ali, Sam, Sonya, Annabelle and Bridey, ably supported by Julie in Marketing.

What words best describe the BD team?

We are enablers! We raise money and promote services to support each and every one of the Guide Dogs teams. We are creative,

energetic, passionate and (some would say) funny. We live the organisational values of innovation and collaboration. We are chameleons. We genuinely care about what our supporters want from Guide Dogs and work hard to provide it.

What is the best part of the job?

It's exciting - we never know what's coming! The fundraising and marketing worlds can be unpredictable so we are always kept on our toes, which makes us proficient problem solvers. We work with what we've got at the time which means there is never a dull day.

What do you all love about Guide Dogs?

The bottom line is that what we do every day helps people and that's what we love to do. It's a special feeling to watch the service teams in action, knowing that we helped make that happen. We love the flexibility in our work place and that people are open to new ideas.

What is something that supporters may not already know about the BD team?

They probably won't know just how much



Some of the team show their fun side! L-R (back) Annabelle, Sonya, Paul, (Middle) Tassy, Sam, Alix, (Front), Lenny and Helix!

we think about them. The team are constantly thinking about how supporters may like to engage with us, what they want to hear about, how and when. We don't spend our time thinking about the organisation so much as we think about the supporters who are the real heroes, changing lives.

Describe the team in a nutshell.

We're movers and shakers. We're about action. We not only work together but we socialise together. **We're like a little family.**

What makes this team unique to others?

We are very fast-paced and adaptable. We often have to change tack to suit the current climate. While some teams don't have the opportunity to work with everyone in the organisation, we consider ourselves lucky because we have contact with everyone. We also get to experience the amazing community support through talking to donors and events which is the best part of the job.

"We have the best job – working with supporters and our amazing services teams to help change the lives of our clients! I can honestly say I love getting out of bed in the morning to come in to work!"

Your continued support of Guide Dogs is so valuable. You make it possible to change lives. Please give today at guidedogs.org.au/donate or by calling (08) 8115 6060

Your community

Introducing 'Quiet Hour'.

Frewville Foodland has introduced Australia's first **sensory-friendly** shopping experience, providing respite for people with sensory overload.

Can you imagine being so overwhelmed by sights, sounds and smells that you avoid going out? Perhaps you know a child living with autism where something seemingly as simple as the weekly shop is so overwhelming for him or her that a meltdown ensues and they run from their parent.

For some, this reality means they simply can't take part in the things most of us take for granted.

But on a Tuesday evening at Frewville Foodland, while the sun is still shining, you could be forgiven for thinking you had caught the team closing for the day.

Normally a hive of activity with a pianist, café and cooking demonstrations, once a week this one-of-a-kind supermarket morphs into a calm, zen-like; almost serene, place to shop.

This is Quiet Hour, Australia's first sensory-friendly shopping experience.

As you peruse the wide range of organic fruit and vegetables and move toward a cheese and bakery section to rival a French boulangerie, a sense of relaxation and calm washes over you. At a long table you'll find regulars pausing to glance over the paper or to help themselves to a complimentary apple. Some inspect the locally grown garlic, hand plaited by Felicia. Gone are the large trolleys and hordes of staff normally found stacking shelves, instead replaced with one person per section simply on standby to help customers as required.

Recognising that a 'regular' shopping experience can be extremely overwhelming for people with sensory overload, The Best Supermarket in the World (yes, that's the official name!) initiated a trial of Quiet Hour last year in conjunction with SA disability provider, CARA.

Following its success, Quiet Hour has become a permanent fixture on Tuesday evenings between 6.30pm and 8.00pm at Frewville and Wednesday at Pasadena.

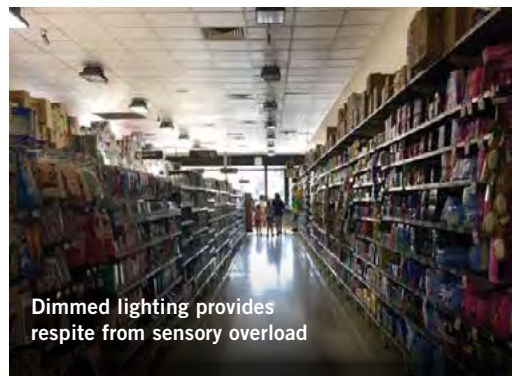
The supermarket is still open to the general public but for people who find everyday things like lights, music, sounds or smells too overwhelming, this is the place for you.

The lights are dimmed, the music and PA is turned off, the volume of the 'beeps' on the check-outs will be lowered, the coffee grinder turned off. The bakery will stop baking and the fish shop will be hosed down to reduce strong odours.

All of this is in aid of providing a peaceful and positive environment to enable people with sensory overload, including children with autism, to take part in everyday tasks that most of us take for granted.



Minimal staff means less noise



Dimmed lighting provides respite from sensory overload

For more information about Quiet Hour call Jassmyn Murphy at Adelaide's Finest Supermarkets on **(08) 8433 0888** or go online at adelaidesfinest.com.au



Everyone is welcome to shop during Quiet Hour

Changing lives

Your support has opened up a world of possibilities for Arron.

Do you remember Arron? He is a young musician in urgent need of a Guide Dog. Arron began losing his sight at the age of six as a result of inflammation of the eye.



Arron's illness and vision loss was traumatic. He has no vision in his left eye and only 10% in his right. But Arron has a positive outlook on life and nothing has slowed him down. In Year 3, while at Townsend School for the Blind, he discovered a love of music and began learning guitar. Now many years later, he has an agent and performs professionally across Adelaide.

Arron is ready to build on his promising music career. He needs to do more gigs at night and study. But he cannot do it with a white cane.

"Gigging is mostly at night and I have to be accompanied. It's frustrating because I always need someone to help me and I want to be independent."



"I've always loved dogs but never considered that I needed a Guide Dog. So it's only recently that I considered applying for my own Guide Dog."

Now, thanks to you, and a very generous gift-match from client and supporter, Neil Cundy, Arron is close to being matched with a Guide Dog.

During our recent Christmas appeal, Neil was so touched by Arron's story that he pledged \$15,000 if supporters like you would help match that amount again. "I can relate to what Arron is facing because I too am night blind. I've been with my Guide Dog, Buddy, for three years and I couldn't be without him now."

In response to Neil's pledge, you overwhelmed us with your generosity and can't wait to now find the right dog for Arron.

In preparation, Guide Dogs Mobility Instructor, Belynda Harvey, took Arron out a few weeks ago for a walk with Guide Dog-in-training, Helix, to see if the pair were a good match.

"The trial walk I took with Helix with Belynda's help was amazing. Walking felt so different – so easy.

"I immediately noticed that Helix led me safely up and along any ramps in Bank Street in the city. There are places where I would normally trip on the edge of a step but with Helix, I felt really safe.

"Also, as I can only see light and shade I'm always taking my sunglasses on and off to help orient myself as I'm walking along. I didn't take them off at all because Helix did all the hard work.

“It was an amazing experience – and all I could think about was all the possibilities that await me when I have my own Guide Dog!

“When walking with a cane, you are always waiting to hit something. Out of nowhere you can find a step or a pole. **I am beginning to imagine what it will be like to have full trust in a Guide Dog; to walk down a street at a normal pace, knowing I am not going to walk into something, knowing that someone else – my Guide Dog – is looking out for me.**

“Now that the possibility is getting closer – especially since Neil’s incredibly kind donation – I’m feeling excited.

“Having a dog like Helix will encourage me to really get out and create a routine, to exercise and care for the dog and work as a team. I’m even thinking about joining the local gym. I’ll be able to go to open mic nights on my own and can even go back to study, so I can become a songwriter. I’ve never really thought about these things – **but now everything seems possible!**”

“I always knew my boundaries and barriers. Now I know that with a Guide Dog in my life, obstacles will disappear and be replaced by open doors.”

What a difference your donations make to young people like Arron. Thank you for your generosity.



Orientation & Mobility Instructor, Belynda, shows Arron how life will change once he is matched.



Getting to know each other.



Your support for Arron has been so generous. Please continue your support to open doors for more young people just like Arron. Donate today at guidedogs.org.au/donate or by calling (08) 8115 6060. Thank you.

Transforming lives in a very special way.

When School Principal, Gail Evans, asked Guide Dogs to help her introduce a Pets As Therapy dog to her school, we knew something magical was about to happen.



Pippa acts as a regulator. She calms students and provides focus during times of stress.

Do you remember the energy you felt in the school yard at lunch time? Kids playing on the playground and running on the oval. Do you ever remember seeing a smiling Labrador keeping the kids company? Admittedly, it's a strange sight at a school but that's what you'll see at Christies Downs Primary School.

The smiling Labrador is Pets As Therapy Dog, Pippa.

While every one of our dogs is extraordinary, Pippa is transforming lives in a very special way. She is now a critical part of the team. Pippa's beautiful nature means she is able to engage with children on a different level.

"Pippa brings joy to the children. She acts as a regulator of sorts for a lot of kids and for some, she is the whole reason they even come to school".

Christies Downs Primary School welcomes a variety of children, including some who experience trauma in the home and struggle even turning up to school. "We also have a high number of children attending school who live with disability or who are on the autism spectrum. For these kids in particular, Pippa offers comfort and companionship – a reason to stay in school on a very basic level. Everything she helps with is one step closer to keeping them here. If kids are distressed, they can go out with Pippa on the oval. **She offers them a distraction to some of the traumatic events they deal with in their day-to-day lives.**

Pippa is the first Pets As Therapy Dog to be placed in a school. Gail noticed a difference in the children after she took a friend's Golden Retriever to school for a short time. Along with her staff, she was amazed at how the children reacted. An information session at Guide Dogs further fuelled her interest in making this a permanent fixture.

"We always say 'it was meant to be'," says Pets As Therapy Program Coordinator,

Sarah Crawford. "When Gail approached me about having a 'school dog', it was an exciting prospect. We just happened to have the perfect dog available; Pippa. Pippa wasn't suited to a career as a Guide Dog or Autism Assistance Dog but showed incredible empathy and worked very well with children. She always appeared to have a smile on her face. I knew she'd be just right. Knowing the incredible difference these dogs make in the lives of children with special needs, we were all eager to give it a go," said Sarah.

One of the most powerful differences Pippa has made at school to date is for a six-year-old student who lives with severe autism and is non-verbal.

"When the student was introduced to Pippa, Watching her interact with Pippa, who sat calmly by her side and waited for the student to notice her, was magical," said Gail.

One student won't move without Pippa being by her side. Some children come to school early so they can have fun with Pippa. They have 'taken ownership' of Pippa's morning routine.

"Two of our students take such care and pride in grooming Pippa every day. They brush her and give her a health check to make sure her paws are all ok; no lumps or burrs. They take it very seriously and are honoured that it is their job," Gail said.



“For some kids providing a peaceful, safe space at school needs to happen before learning takes place. Pippa provides purpose, something to focus on. For one young boy, knowing that Pippa will be here to welcome him is the only way he will come to school.”

Pippa also acts as a support to the staff in working with the children. She helps the children to transition into their day of school when arriving in the morning and helps them ‘refocus’ if they are distressed.

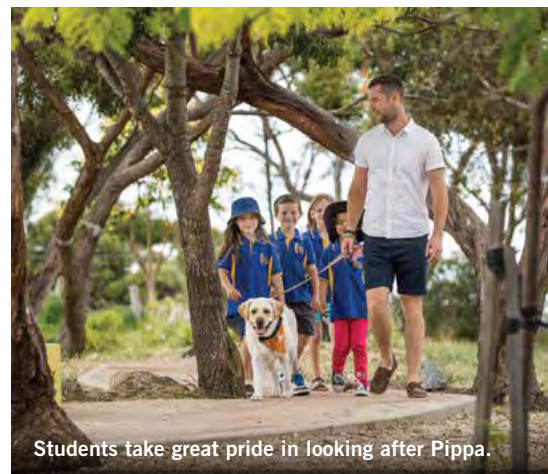
As a Pets As Therapy Dog, Pippa doesn’t have the same rights in public as a Guide Dog or Autism Assistance Dog but she does at the school. Her coat goes on at assembly and formal affairs and when adults visit the school, so everyone knows not to pat her at those times. It also helps educate the kids on the rules for Guide Dogs and Autism Assistance Dogs.

“However, when Pippa’s coat is off, the children know they can interact with her. Pippa always has a smile on her face. She is so good for the children and their well-being. “We couldn’t imagine life without Pippa now. I’d highly recommend it to other schools.”

It’s thanks to people like you who continue to support the Guide Dog Program, that we can make such a difference in the community. **Your continued support enables Guide Dogs to help people live with safety, independence and inclusion. Please give generously today at guidedogs.org.au/donate.**



Principal, Gail Evans, loves working side-by-side with Pippa.



Students take great pride in looking after Pippa.



Pippa is never short of friends at lunch time!

Would a dog like Pippa make a difference at your school? Contact our **Guide Dog Services** team on **(08) 8203 8327** to find out more about the South Australian Pets As Therapy program and how it could support your students.

Marie goes for gold

“Vision loss is not an excuse. It does not define who you are.”

Marie Ryan, Masters Games Gold Medallist, has embraced her vision loss with a passion – and inspires everyone around her to think differently.

Marie began her association with Guide Dogs a number of years ago when she discovered, four years after a traumatic car accident, that she had been left with just 15% vision.

“After the accident it took a long, long time to get back on my feet. But it wasn’t until four years later that I discovered my vision loss.

“I learnt to walk again and got back to life, but I kept having accidents. I broke both arms, tripped over, fell into furniture and was on crutches.

One day I nearly walked into traffic after getting off a bus. That was the day I got my vision checked and discovered that due to the bleed on the brain I had suffered in the accident. I only had 15% vision left.

“It was a relief to find out actually, as I had no idea. I had just carried on with life as best I could – even driving – and I couldn’t work out what was wrong with me!

“I got in touch with Guide Dogs, had Orientation and Mobility training and learnt how to use a white cane. **That was my road to freedom - my road to life.**

“After mastering the cane, I was fortunate to be matched with my first Guide Dog, Dara. Dara was wonderful and was with me for many years. I now have my second dog, Ebony. I wouldn’t give up having her for the world. When I’m out, I don’t have to hold my husband’s hand. **I’m independent.**

“The accident changed me in many ways. I had 62 days in hospital to think – and I realised that as a busy mum, I’d been so busy with everyone else, I hadn’t made time for me. So I started looking for new experiences, like joining the Masters Games ten-pin bowling team.

“I really enjoy my bowling and attending the Masters of Masters was just brilliant. We travelled to Queensland and played against fully sighted international players, with no handicap. It was an even playing field – everyone was the same. And we still won gold medals!

“I had one sighted player come up to me afterwards and she cried. She said she’d never really appreciated life and she thanked me for showing her that she had taken her life – and her sight - for granted. That was worth more to me than a gold medal.”

“I can honestly say my vision loss has been a blessing. It slows me down enough to make me appreciate the important things - and I was never this busy until I became vision impaired.



Marie Ryan shows off her well-deserved gold medal.



The winning team, accompanied by Guide Dogs Sonic and Ebony.

To support the Guide Dog Program for people like Marie, please donate today at [guidedogs.org.au/donate](https://www.guidedogs.org.au/donate) or call (08) 8115 6060

Your gift will help look after Guide Dogs into the future.

If you're out and about in Kadina, chances are you'll see Neil and Buddy pass by on the street.

Neil Cundy has been a client and supporter of Guide Dogs for many years. His vision began to deteriorate about 25 years ago due to Retinitis Pigmentosa, which causes night blindness and tunnel vision.

"I had begun to use a white cane to get around. But after six years, I was tripping at kerbs and sometimes bumping into people. I qualified for a Guide Dog and that's when I met Buddy, a magnificent dog.

"I was amazed at how intensive the training was. It was clear why training a Guide Dog is so expensive. I had begun to shuffle when I walked with a cane but as I began to walk with Buddy, I quickly gained confidence. From the first minute, I knew I would have 100 per cent confidence in Buddy."

Recently, Neil had a reminder of what life was like before Buddy. "When the weather is hot I don't take Buddy out, so I decided to make the four block trek up the street to my bowling club with the use of my white cane. I'm used to Buddy guiding me around everything. On this walk, I had to find everything myself.

It really hit home what a difference Buddy has made to my life. "It also made me feel absolutely right about my recent decision to include a gift to Guide Dogs in my Will."

Neil says his support for Guide Dogs is absolutely heartfelt. "The difference this organisation makes in people's lives is extraordinary. As well as changing my Will, I've recently made a large donation to help a young man named Arron.

"There are still so many people in need and so many dogs to train – Guide Dogs is going to need money for a long, long time. I want others to receive the same level of support that I have.

"I chose to add Guide Dogs to my Will to provide support into the future. I hope that other people feel the same."

Making a bequest in your Will is a very special commitment to Guide Dogs and ultimately one of our most valued gifts. Over the years, bequests have allowed Guide Dogs to evolve and meet the growing demand for services. Leaving a gift in your Will ensures that these demands will continue to be met well into the future.

A Bequest is a gift and can be anonymous if you wish. It is an instruction contained within your Will that specifically reserves part of an estate for a particular beneficiary. Bequests can be made in a variety of ways to reflect your specific wishes.

We act with integrity and will use your gift carefully and cost effectively, so that it has the greatest impact for people living with disability.



Wendy, Neil and Buddy
at the Adelaide Town Hall.

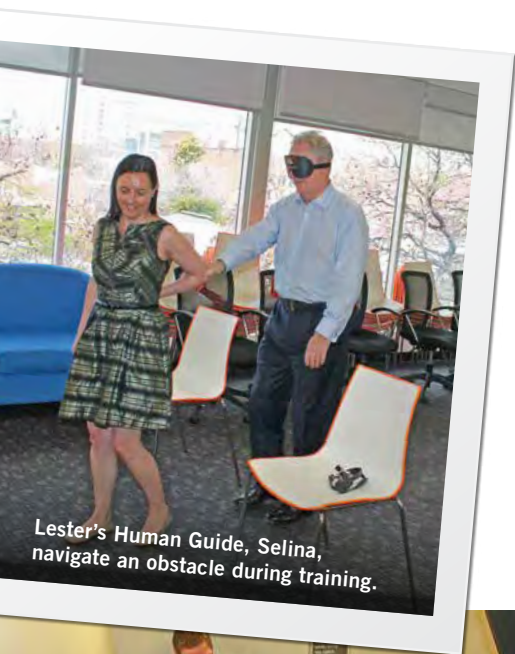
Whether large or small,
every gift is greatly valued
because it will help make a real
difference to someone's life.

For more information on
leaving a gift in your Will, visit
guidedogs.org.au/bequests
or phone Alix Katala on
(08) 8203 8319.

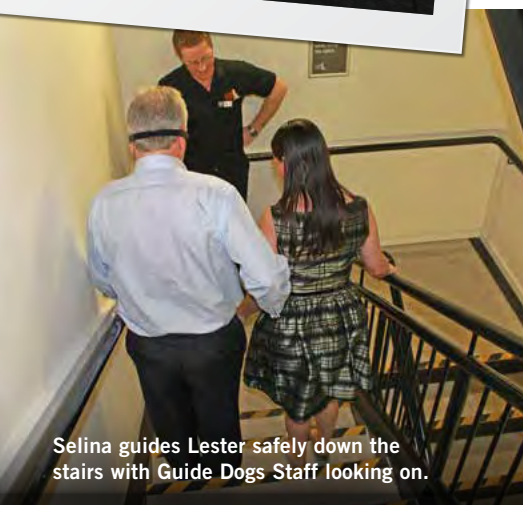
Events

“My day in darkness” – Joe Thorp

Could you work one day in darkness to bring light into someone's life?



Lester's Human Guide, Selina, navigate an obstacle during training.



Selina guides Lester safely down the stairs with Guide Dogs Staff looking on.

In October last year, six SA bosses participated in **Boss's Blind Date**, an immersive fundraising initiative. Each boss was challenged to experience vision loss for a day, wearing a blindfold and accompanied by a human guide.

Our inaugural participants were Westpac State General Manager SA/NT/TAS Lester Wynne-Jones, Guide Dogs SA/NT then CEO Kate Thiele, Brand South Australia CEO Karen Raffan, TrainingxDesign Director Gina Brooks, PwC Partner Julian McCarthy **and our own Guide Dogs SA/NT Chairman, Joe Thorp.**

During the event, these busy bosses spent a standard workday wearing a blindfold; attending meetings, lunch appointments, catching public transport and undertaking a variety of daily tasks.

All participants and their human guides were carefully trained on what to expect and how to cope for the day – but as Joe discovered, there were still countless lessons to be learnt about life without sight.

Joe said that his day in darkness provided an astonishing insight into life as a vision impaired person.

“I had no idea how much I rely on non-verbal and visual cues to read people and situations.”

In meetings, I quickly discovered how easily a visually impaired person may become ‘invisible’ - simply not included in conversations due to missing visual cues. Chairing a board meeting and gaining consensus was especially challenging,” he said.

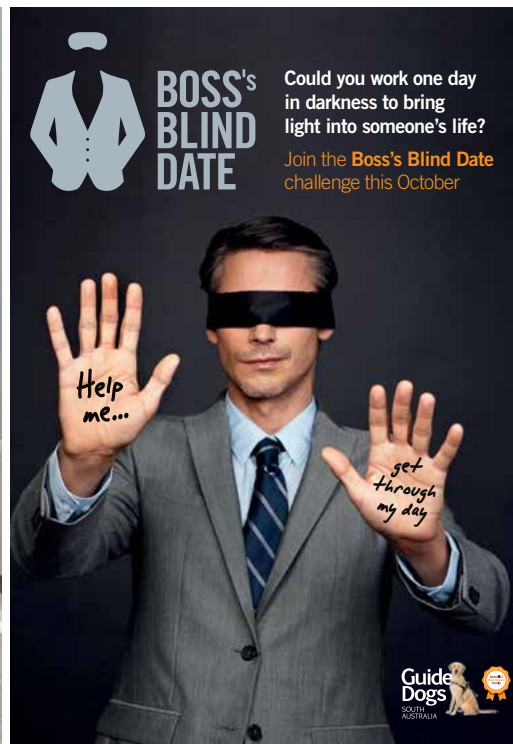
“Catching the tram was a highly stressful event, just as much for my wonderful EA and human guide, Glenys, as it was for me.

I was particularly concerned by the lack of understanding of fellow commuters, who pushed and rushed past us, didn't give way or seem to notice that I was using a white cane. My respect for those who are able to navigate day-to-day life with a cane independently has grown enormously.

“I've also gained a new appreciation for the quality of training that the Guide Dogs staff provides. Both Glenys and I agreed that the training we received was excellent. I have strongly encouraged all Directors to take on this experience, to gain a real insight into the daily challenges faced by our clients.

“I'd like to pay special tribute to Lester Wynne-Jones, who was behind the original idea for Boss's Blind Date.

His leadership and support for Guide Dogs has been extraordinary and we are very grateful to Lester for his innovation and commitment.”



The inaugural Boss's Blind Date raised over \$25,000, which will support the funding and training of a Guide Dog to assist someone living with severe vision loss; but it's not over yet.

To learn more or take part this October – or a time that suits you - visit **bossblinddate.com.au** or phone Alix Katala on **(08) 8203 8319.**

Events

City-Bay 2016

City to Bay raises \$10,000!

Every year, dedicated supporters walk, run, ride or even push a pram to raise funds for Guide Dogs in the annual Sunday Mail City-Bay (C2B) event. Three very special people contributed to the grand total of \$10,606 in 2016 – so special they even decided to share the top prize, a \$500 Harbour Town voucher.

Howard Duchene and his wife are long-term supporters. This year Howard was the top C2B fundraiser, raising \$1,237.75! They've also raised no less than 16 puppies in three years!

"We love animals and giving back to the community, so Guide Dogs was a natural fit for us. I ran the event with other supporters and we all agreed the experience was very uplifting.

"As Puppy Raisers we have a huge investment in the success of these dogs. The role of Puppy Raiser is interesting and challenging and so rewarding – each puppy is so different, with a different personality."

Judy Masters is no stranger to Guide Dogs either. Judy's son Lachlan, was matched with Autism Assistance Dog, Zeke, several years ago. This year, Judy raised \$1,022 for the C2B event.

"This was my second City to Bay - our wonderful Autism Assistance Dog, Zeke

Special thanks must go to the **University of Adelaide** for hosting our BBQ and sharing site space on the day. **This generosity saved us hundreds of dollars!**

and I walked the 3kms together. I am a passionate supporter, public speaker and fundraiser for Guide Dogs. My son Lachlan has severe autism. Before we had Zeke, going out had become impossible, as had sleeping through the night. From the moment Zeke arrived, our lives turned around. Lachlan slept through from the very first night. We can now go out with complete confidence, knowing Lachlan is safe and calm."

Lauren Govan, who raised \$940, began running at the age of 49 - an incredible achievement, as Lauren is legally blind.

"This was my second City to Bay run and it feels great to have a goal and achieve it! I raise funds for Guide Dogs because I believe strongly in their work.

"Life is a struggle when you lose or are losing your vision. It can be socially isolating – but it shouldn't be. Fundraising is a great way to help pay for Guide Dog training. They really do transform lives."

Keep up-to-date with Guide Dogs events and fundraising opportunities at guidedogs.org.au/support or call **(08) 8203 8302** for more information.



The Guide Dogs team on the day of the City to Bay (pictured with working guide dog, Buddy).



Adelaide Uni preparing for City to Bay with dog in training, Nessie.



"I fundraise so that I can help provide this vital service for other families." Judy

What's on at
Guide Dogs



Save the date!

Wednesday 26 April is **International Guide Dog Day**. Stop the traffic in Adelaide - come and join our Paws Parade to celebrate 60 years of amazing work by our Guide Dogs, Autism Assistance Dogs and Pets As Therapy Dogs. Contact our team on **(08) 8115 6060** to join the parade!



Paws for reflection – Tango retires

Well, after many years of watching all the happy, smiling faces of the kids visiting the Discovery Centre and community visits, I'm hanging up my coat and heading off into the sunset – that is, I'm retiring as Guide Dogs' Ambassador.

I have thoroughly enjoyed the myriad of Guide Dogs social events and fundraisers where I was the centre of attention, revelling in all the 'ooohs' and 'aaahhs' at my skills and handsome face - and the countless offers to take me home.

I'll be handing over my coat and role to another, younger dog – and transition into a life of leisure. Now there's some food for thought..... hmmmm, did someone say food....!

See ya,

The 'Labradorable' Tango.



LEAD THE WAY MAY



Save-the-date!

Join Guide Dogs for **Lead the Way May** to improve your fitness and support people living with disability.

To register go to leadthewaymay.com.au or call **(08) 8203 8302**



Are you thinking of booking a cruise this year? Travel Tree are looking for travellers with vision impairment and volunteers to act as a Sighted Companion on a fully escorted fly/stay/cruise holiday. Packages start from \$2,530 pp twin share. Contact Chris Dagostino at Travel Tree on **(08) 9382 5084** or email chrisd@traveltree.com.au for more information.



Visit our website
guidedogs.org.au



Join us on Facebook
facebook.com/GuideDogsSANT



Follow us on Twitter
twitter.com/GuideDogsSANT



Follow us on Instagram
instagram.com/GuideDogsSANT



Toll Free **1800 GUIDE DOGS**
or visit **guidedogs.org.au**
info@guidedogs.org.au

SOUTH AUSTRALIA
251 Morphett Street
Adelaide SA 5000
Tel (08) 8203 8333
Fax (08) 8203 8332

NORTHERN TERRITORY
4/5 Keith Lane
Fannie Bay NT 0820
Tel (08) 8995 2222
Fax (08) 8995 2223

Donate Now • Online at **guidedogs.org.au** • By calling **(08) 8115 6060** • By mail using enclosed donation form and envelope
Paw Prints is available in large print or audio online.

Thank you



Platinum Sponsor



Gold Sponsor



Design Partner



Silver Sponsor



Bronze Sponsors



National Partners



Patrons

SA: His Excellency the Honourable Hieu Van Le AO, Governor of South Australia

NT: His Honour the Honourable John Hardy OAM, Administrator for the Northern Territory

General Sponsors

Entrée Recruitment
Entertainment™
Haighs
Munchbox
RACV Salary Solutions
winedirect.com.au
Westpac

Community Partnerships

Bunnings Mile End
The Male Metropolitan Choir
Harbour Town

Service Partners

Autism SA
Blind Sporting Council
CanDo4Kids
CICADA
Deafness Forum
Glaucoma Australia
HI/DKON
Kilparrin Teaching & Assessment School
Meniere's Australia Inc.
National Relay Service
NDS SA
SASVI
SHHH Australia
Taxi Council SA
Tinnitus SA
Vision 20/20