

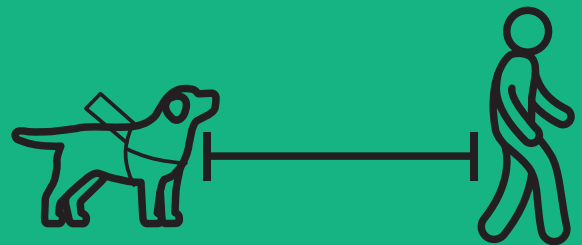
# Petiquette for Polite Pooches

# Guide Dogs.

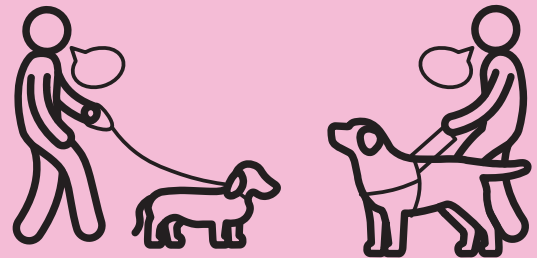
Keep your pet dog on a leash and under control when out and about.



If you see a working Guide Dog in harness, please give it and its Handler space.



When approaching or passing a Guide Dog team with your pet dog, please clearly introduce yourself to the person and say you have a dog with you.



If you see a loose dog, please alert your local council.



Don't pat, feed or otherwise distract a working Guide Dog. A well-intentioned pat can undo months of training.

