



**Guide Dogs.**

# **QLD Annual Report**

**2024 – 2025**

Your path, our purpose:  
Life-changing services together

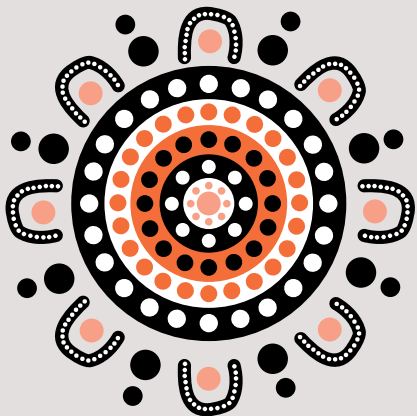
# Contents

Our mission	1
Message from the our Board President	3
Message from our CEO	5
Message from our Patron	7
Mitchell’s story: Living without limits	9
Measuring our impact	10
Ebony’s journey: Turning darkness into light	13
Our Board of Directors	14
Our Client Liaison Committee	16
Rod & Nola’s legacy of transformational giving	17
Paul’s journey of giving back	18
Our volunteers	19
Thank you to our valued supporters	20
In loving memory of	22
A legacy that lives on	23
Puppy Pals	25
Strategy Framework 2024-2030	26
Abridged financial statements	28



Scan here for more information on how you can support Guide Dogs Queensland.

We acknowledge Aboriginal and Torres Strait Islander peoples as the First Peoples and the Traditional Owners and Custodians of the lands and waters on which we live and work. We pay our respects to their Elders, Knowledge Holders and Leaders, past, present and emerging and extend that respect to all Aboriginal and Torres Strait Islander peoples.



We empower people with low vision or blindness to achieve independence, participation, inclusion and wellbeing.







# Message from our Board President

This year has been one of both celebration and transition for Guide Dogs Queensland. As we mark our 65th anniversary, we have had the chance to reflect on the proud legacy of this organisation and the extraordinary impact it has had in the lives of Queenslanders living with low vision or blindness. For me personally, this milestone year is particularly meaningful, as it will be my final year serving as President of the Board.

It has been a privilege and an honour to serve in this role. Over my time with Guide Dogs Queensland, I have witnessed remarkable growth, innovation and resilience. This year has been no exception. The renewal of our Peak Body funding from the Queensland Government for another five years reflects the strength of our advocacy and our role as a trusted voice for the community. Equally, being recognised once again as one of Australia's most trusted charities in the 2025 Reader's Digest Trusted Brands Survey is a testament to the dedication of our staff, the commitment of our volunteers and donors, and the enduring support of the community.

I am deeply grateful for the opportunity to have worked alongside such a passionate and talented team. To my fellow Board members, our CEO Jock Beveridge, and our dedicated staff, thank you for your leadership and unwavering commitment to our mission. To our volunteers, donors and community partners, your generosity has been the lifeblood of this organisation, ensuring we can continue to deliver world-class services and opportunities for independence, accessibility and inclusion.

While this is my last message as President, I leave with great confidence in the future of Guide Dogs Queensland. With a new five-year strategic plan in place, a strong leadership team, and the continued support of our community, the organisation is well positioned to achieve even greater impact in the years ahead.

It has been the honour of my career to serve this organisation and to play a part in its journey. Thank you for your trust, your commitment, and your belief in the life-changing work of Guide Dogs Queensland.

With gratitude,

**Richard Anderson OAM**  
President of the Board  
Guide Dogs Queensland







# Message from our CEO

In 2025, Guide Dogs Queensland (GDQ) celebrated a very special milestone, our 65th anniversary. It was a year to reflect on the remarkable journey of an organisation built on trust, dedication and compassion. From our beginnings in 1960, led by Hubie Morris, our first volunteer, advocate, fundraiser, and guide dog handler, to today, one thing has remained constant: the belief that with the right support, people with low vision or blindness can live with independence and confidence.

That belief continues to inspire everything we do. This year, we were humbled to again be recognised as one of Australia’s most trusted charities, receiving a Highly Commended award in the 2025 Reader’s Digest Trusted Brands Survey. Trust like this cannot be won overnight. It is earned, day by day, through every puppy raised, every Guide Dog trained, every service delivered, and every act of kindness from our volunteers and donors.

Our impact this year speaks to that shared commitment. We welcomed 64 new pups, placed 10 Guide Dogs with their new handlers, and supported 108 active Guide Dog teams. We secured renewal of our Peak Body funding from the Queensland Government for another five years. A powerful endorsement of our advocacy work and our role as the voice of our community. This funding provides more than \$800,000 across the period and affirms the trust placed in us to drive positive change.

We advanced major organisational priorities, including the development and strong progress of our IT Strategy and Roadmap, setting the stage for new ways of working that will strengthen client, donor, and volunteer experiences. We also listened carefully to our staff through a major all-staff survey. The feedback was honest and constructive, helping to shape a stronger, more connected future for GDQ.



Throughout the year, we also embraced important cultural moments, such as our NAIDOC-themed staff lunch, where we were privileged to hear directly from Uncle Bob Anderson. And in a year of milestones, we were thrilled to welcome our first Celebrity Ambassador, Shayna Jack, whose passion for dogs and the low vision and blind community brings new energy to our mission.

As we step forward into the future, guided by our 2025–2030 Strategic Plan, we carry with us the lessons, trust and achievements of the past 65 years. I extend my deepest thanks to our staff, Board, volunteers, donors, and of course, our clients, whose courage and resilience continue to inspire us all.

With your continued trust and support, I am confident that we can continue to build on our proud legacy and deliver world-class services to Queenslanders living with low vision or blindness.

Kind Regards,

A handwritten signature in black ink, reading "Jock Beveridge".

**Jock Beveridge**  
CEO, Guide Dogs Queensland





# Message from our Patron

As Governor of Queensland and Patron of Guide Dogs Queensland, I congratulate the organisation on its continued and far-reaching support for Queenslanders with low vision or blindness.

With a proud and enduring history, Guide Dogs Queensland has earned the admiration of our community through the commitment of its Board, CEO, staff, trainers, volunteers, donors and fundraisers. Your shared dedication ensures the organisation remains a vital and trusted resource for those who rely on its services.

It is heartening to see the organisation evolving to meet the needs of clients of all ages, while embracing global advancements and strengthening its impact. Future-focused strategies reflect a clear intent to continue enhancing the lives of Queenslanders living with vision loss-and the outcomes being achieved are a testament to that commitment.

Helping clients build confidence, expand their choices and lead more socially connected lives is truly life-changing work. The special bond between client and guide dog - often described as life-restoring and friendship at its most loyal - is central to this transformation.



Guide Dogs Queensland offers so much more than mobility support. Its holistic services empower clients to live more independently, feel more included, and enjoy richer life experiences.

Congratulations on another outstanding year of service and impact.

*Jeannette Young*

**Her Excellency the Honourable  
Dr Jeannette Young AC PSM**  
Governor of Queensland





# Mitchell's story: Living without limits

Meet Mitchell, a remarkable 15-year-old who is embracing his low vision journey and continuing to live life on his own terms.

Mitchell lives with Stargardt's disease, a rare genetic eye condition that causes progressive vision loss. Throughout his life, he was told he would face obstacles and limitations because of his vision, with doctors predicting he may lose all sight by the age of 30. But Mitchell is determined not to let this define him.

A passionate musician, he plays the saxophone and reads music from an iPad, proving that creativity and adaptability can go hand in hand. He also competes in triathlons, pushing himself physically and showing that nothing can stand in the way of his goals.

As a teenager, Mitchell was introduced to Guide Dogs Queensland's orientation and mobility services, where he learned to use a white cane. This has opened up new opportunities for independence and given him the skills to navigate the world with confidence.

Mitchell's story is a reminder that low vision or blindness is no barrier to chasing your passions and living without limits.



“I can see how the cane has boosted Mitchell's confidence. It definitely makes us feel more at ease knowing he can navigate spaces independently.”  
— Lisa, Mitchell's mum



# Measuring our impact

We’re committed to acting on what we learn through our national Social Impact Measurement framework. In previous years, we have learned that Clients would like to see Guide Dogs speak up more for change in the community. Advocacy is one of the pillars of our new strategic plan. You can read more about this on page 27.

We support people with low vision or blindness to live the life they choose. We know that physical, social and digital environments can create barriers. These barriers make it harder for people who are blind or have low vision to do everyday things, connect with others, or feel positive about the future. Guide Dogs is increasingly involved in advocacy to address these systemic barriers.

77%

of Clients say they have more choice in how they go about their day.

82%

of Clients with a Guide Dog are able to spend more quality time with their families.

“Guide Dogs allows me to have independence and do what I want to do.”

73%

of Clients say they feel more positive about the future

79%

of Clients say they are more independent when getting out and about

“Prior to this I couldn’t even go to the shops. Now I am more independent, it’s such a relief to have the ability to do that on my own.”

5,954

Clients across Australia



51% of clients are aged 15-64

49% of clients are aged 65+

33% of clients live in regional, rural or remote areas

67% of clients live in metropolitan areas



657 working Guide Dogs in the Australian community.

101 Guide Dogs matched with their new handlers this year.







# Ebony's journey: Turning darkness into light

At the age of two, Ebony was diagnosed with Retinitis Pigmentosa (RP), a rare genetic condition that causes tunnel vision and progressive blindness. By her teenage years, she had less than 5% vision, and today she lives with complete blindness, as well as additional eye conditions including Nystagmus and Acute Angle Closure Glaucoma.

For Ebony, the journey has not always been easy. Growing up with vision loss brought challenges at school and in everyday life, and she often had to work harder than her peers to adapt. Accepting her condition was difficult, but over time she discovered strength she never knew she had.

With the support of Guide Dogs Queensland, Ebony has been able to access practical training, mobility aids, and the confidence to embrace her independence. Learning to use a cane and assistive technology from a young age gave her the tools to thrive, while continued guidance has helped her see new possibilities for her future.

Now 32, Ebony is a proud mother of four, a successful business owner, and an ambassador for Guide Dogs Queensland. She shares her journey to inspire others living with low vision or blindness, showing that this does not define who you are or what you can achieve.

Ebony's story is one of resilience, courage, and hope. She has truly turned her darkness into light and now shines that light forward to guide others.



“With Guide Dogs by my side, I found strength I didn’t know I had.”  
– Ebony



# Our Board of Directors



**Richard Anderson OAM**  
**President**  
BCom FCA FCPA



**Leanne Muller**  
**Vice President & Chair**  
BCom CA ASIA GAICD



**Drewe Jackson**  
**Director**  
BCom MSc Finance CFA GAICD



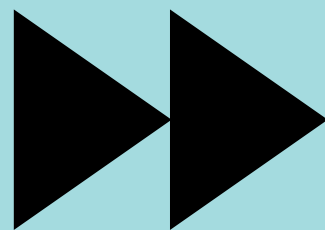
**David Swain**  
**Director**  
RN DipBus BHlthSc MEd GAICD  
Wharton AMP



**Lydia Daly**  
**Director**  
LLB, BBusMan,  
Certificate II Horticulture



**Tom du Preez**  
**Director**  
BCom Hons, CA, FCMA, CGMA



Find our Board of Directors Profiles  
by visiting our website or scanning  
the QR code.





# Our Client Liaison Committee



Debbie



Rhett and Guide Dog Trixie



Santiago and Guide Dog Trey

**Client Liaison Committee:**

- Chris Backstrom
- Debbie Venables
- Layla Eather
- Linda Jorgensen
- Rhett Bryant
- Santiago Velasquez
- Therese Jansen

The purpose of our Client Liaison Committee is to enhance communication between Guide Dogs Queensland and our Clients, aiming to improve service delivery and outcomes.

Committee members are volunteers and committed to supporting Guide Dog Queensland’s mission.

Our services will assist our Clients to achieve their optimal level of mobility.

The committee meets upwards of 3 times a year.

# Rod & Nola’s legacy of transformational giving

Rod and Nola first encountered Guide Dogs Queensland through a television advertisement. The story they saw showed the profound impact that an assistance dog, such as a Guide Dog can have on the life of someone struggling with daily challenges. Inspired, they reached out to learn how they could help.

From that first moment of connection, Rod and Nola became extraordinary supporters. They generously sponsored their first three guide pups — Ember, Echo, and Ella — beginning a relationship that would only grow deeper.

As they followed the progress of their pups, Rod and Nola’s interest expanded to our Assistance Dog program. They quickly recognised the incredible potential of this work. While our guide dogs are already a “gold star” service, those dogs who choose a different career path can also go on to shine — as assistance dogs for people living with PTSD and other challenges.



Rod and Nola’s support has helped us realise and invest in this vision. Their generosity is creating a lasting legacy, ensuring that both guide dogs and assistance dogs can continue to change lives, bringing independence, confidence, and hope to the people who need them most.



# Paul’s journey of giving back

Since joining Guide Dogs Queensland as a volunteer in 2021, Paul has given his time, skills, and kindness to help make a difference in the lives of people with low vision or blindness. In 2024, he proudly received his three years of service award, having now completed more than 100 hours of volunteering.

With a background in events, hospitality, and aviation, Paul’s life took an unexpected turn when medical issues led to early retirement. Searching for a new purpose, he discovered the joy and connection of volunteering. “I wanted to make friends, keep my mind fresh, and feel like I was contributing again,” Paul shares.

Paul’s time with Guide Dogs has been filled with variety and purpose. He spent 18 months in the kennels, grooming and feeding Guide Dogs-in-training, keeping their spaces clean, and supporting staff. He’s helped with mailouts for supporters, assisted at lottery events, travelled across Queensland for barbeques, and even joined staff on the road to collect the iconic Guide Dog-shaped donation tins.

One of his favourite moments each year is the Annual Puppy Pals Day.

“It’s such a great family day,” Paul says. “There’s entertainment for the kids, Guide Dogs-in-training demonstrations, and the pups are brought out for supporters to give them a quick pat. Seeing the joy on people’s faces and sharing the hard work that goes into training these amazing dogs is something special.”

Paul’s dedication, warmth, and willingness to lend a hand wherever it’s needed have made him an invaluable part of the Guide Dogs community. As he looks ahead, Paul says he’s excited for “a long and fulfilling volunteer career with Guide Dogs.”



# Our volunteers

## Celebrating milestone anniversaries in 2025

10+ Years	Alan Burgess	40+ Years	Dorothy O'Brien
	Annette Burgess		Fay Gourlay
	Annette Gabriel		Fred O'Brien
	Dave Byars		Gillian Stout
	Jan Batty		Jan Manson
	Jenny Teo		Joan Ritchie
	John Hynard		Karen Carter
	Josephine Ive		Laurie Dunn
	Margaret Cook		Leanne Muller
	Pauline Smith		Leigh Daunt
15+ Years	Shelley Hynard		Lin Mogg
	Tiani Boulton		Maureen Brown
	Barbara Attwood		Maree Maizey
	Blanche Hawthorne		Neil Ritchie
	David Rae		Pat Collins
20+ Years	Larena Butler		Lis Foat
	Rae Hall		Zita Penrose
	Chris Roberts		
	Dot Rosebery		Richard Anderson OAM





# Thank you to our valued supporters

## Puppy Sponsors

Aileen Braybon  
Claire Kinnon  
Deborah Knappick  
Gweny Johns  
Hayward Family  
Johnstone Family  
Joy Kefford  
Nancy and Murray Wells  
Neil Badcock  
Penny Graf and Ray Chamberlain  
Ray Trestrail  
Rhonda Semple  
Rod and Nola Wade  
Shirley Hickmott  
Susan Lee  
Wendy Johnson

## Philanthropic & Other Grants

Ann Helene Toakley Charitable Endowment  
Department of Justice - Gambling Community Benefit Fund  
Enable Energy grant – Empowering Energy Efficiency for Vision Impaired Queenslanders  
James Frizelle Charitable Foundation  
Jack Elston Sutton Memorial Fund  
People First Bank Foundation  
Queensland Government – Peak Body  
The Robert Devine Trust  
Townsville Council grant – Townsville Canine Carnival  
Transurban - 101 Road Safety Awareness for Brisbane’s Vision Impaired

## Philanthropists

A Braybon  
A Reynolds  
A Sorbellio  
A Tilley  
Atherton Family  
B Clappis  
B Duhig  
B Hutchison  
B James  
C Breedon  
C Britton  
C Burrell  
C Carlisle  
C Gidney  
C Groenberg  
C Hincliffe  
C Kinnon  
C Little  
C Lloyd  
C Marchese  
Cromellin Family Foundation  
D Baartz  
D Beal  
D Cummings  
D Gaemers  
D Goan  
D Mayne  
D McCutcheon  
D Sweetapple  
D & L Jess  
Donnelly Family  
E Kopp  
E Mackenzie  
E Tyconi  
E & F Wall  
Estate of Beryl Dymond  
F Mellick  
G Fysh  
G Graham  
G Hartnett  
G Parkinson  
G Whiting  
Harvogind Family  
Hayward Family

H Sheardown  
J Blackshaw  
J Dennison  
J Harvey  
J Hoare  
J Hoogland  
J Munson  
J Stewart  
J Tygesen  
J Wythes  
J Young  
K Hansen  
K Howsan  
K Ison  
K Manning  
K Rolfe  
K Watt  
L Brown  
L Lewandowski  
L Taylor  
L & D Dunn  
M Hay  
M Lejeune  
M Stevenson  
Mr & Mrs Lindsay  
P Cameron  
P Coyle  
P Hackett  
P Hendon  
P Robertson  
R Anderson  
R Carter  
R Faulks-Widjayatno  
R Locke  
R McCaul  
R Mooney  
R Richards  
R Saunders  
R Scheuber  
R Semple  
R & J Kempnich  
R & N Wade  
S Drynnan  
S Hickmott  
S Lamont  
S Leather  
S Mori  
S Sutherland  
T Beal  
U Sheldon  
V Cribb  
W Gibbs  
Young Family

## National Partners

Black Hawk  
Boehringer Ingelheim Animal Health Australia  
Coles  
Flybuys  
Greenstone Financial Services  
IDEXX  
KONG Company  
Petstock Foundation  
Ritchies IGA  
TPG Telecom Foundation  
Woolworths

## State Corporate Partners and Supporters

Bishopp Signs  
Brisbane Airport Corporation Pty Ltd  
Burford Reinforced Plastics  
Carina Leagues Club  
Comiskey Family Foundation  
Community Bank Samford a part of Bendigo Bank  
Cornetts Supermarkets  
Dreamworld  
Emporium Hotel South Bank  
Greencross Vets  
JJ Richards & Sons Pty Ltd  
Just Genes AB Services  
Mercury Technology Solutions  
Metcash Food & Grocery – IGA  
Showzer Pty Ltd  
Wagstaff Piling Pty Ltd

## Workplace Giving

Allianz  
Auto & General Holdings & Compare The Market  
Queensland Rail  
RACQ  
Stellar (Probe) Asia Pacific  
Suncorp Group  
Westpac Group

## Impact Day Supporters

Austcover  
Auto & General Holdings Pty Ltd  
BDO Services Pty Ltd, CFO Advisory  
HUB24  
InterFinancial  
Kmart  
PwC  
Shell QGC  
Solution Underwriting

TABCorp  
Volvo Finance Australia Pty Ltd

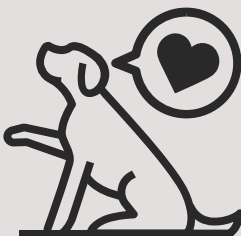
## Community Supporters

Adventure Reels  
Ausbuild  
Bagara Golf Club  
BMW Brisbane and Westside  
Bribie Island Central Shopping Centre  
Brisbane Grammar School  
Brookside Shopping Centre  
Bunnings Brendale  
Bunnings Carseldine  
Burpengary Plaza Shopping Centre  
BVW Group  
Caloundra Shopping Centre  
Capalaba Central  
Cairns City Kennel Club  
Cairns Show  
Caterpillar of Australia Pty Ltd  
Charter Hall Brisbane Square  
Clayton’s Towing  
Containers for Change  
Cooktown Discovery Festival  
Cowboys Leagues Club  
Deloitte Foundation  
Dexus  
Downer EDI Rail Pty Ltd  
Dreamworld  
Eatons Hill Hotel  
Eden Health Retreat  
EKKA  
Edge Hill Post Office  
Everton Park OSHC  
Expo Event Services  
Fernvale-Lowood Uniting Church  
Gold Coast Community Fundraising Ball  
Gold Coast Turf Club  
Gold Tower Brisbane  
Goodstart Early Learning Centres Cairns  
Grill’D Cairns Esplanade  
Grill’D Chermside  
Grill’D Pacific Fair  
GTB Engineering Tully  
Intercontinental Sanctuary Cove Resort  
Italian Community Centre Association Inc Cairns  
JLL  
Kawana Shoppingworld  
Kenilworth Bakery  
Kings Beach Tavern

KPMG Brisbane Cup Winners 2025  
Lions Club of Caloundra  
Lions Club of Gympie  
Loans.com.au  
Mansfield State High School  
Maree Davidson  
Marketplace Warner  
McGrath Real Estate Caloundra  
MCI Australia  
Nambour Plaza  
Noosa Village Shopping Centre  
Northside Concert Orchestra  
Piccones IGA  
Queensland Garden Show  
Queensland Rail  
Redcliffe First Settlement Lodge No.287  
Return-It  
Rotary Club of Nambour  
Runaway Bay Shopping Centre  
Sanctuary Cove Ladies Golf Club  
Serendipity Farm  
Smithfield Shopping Centre Cairns  
SOPO  
Solahart Cairns  
Southport Golf Club  
St Bridgid’s Annual Dinner Committee  
St Pius Primary OSHC  
Strathpine Community Kindergarten  
Strathpine Shopping Centre  
Sunshine Coast Agricultural Show  
Sunshine Plaza  
The Heights Watch (Stafford3)  
The Langham Hotel Gold Coast  
The Lynton Group  
The Southport School  
The Star Entertainment Group  
Torrens University Australia  
Townsville Canine Club  
Wallace Bishop  
Wynnum Manly Leagues Club

## Volunteer Optometrist

Martin Hodgson





# In loving memory of

In 2024/2025, we were honoured to receive generous bequests from many valued supporters who chose to remember Guide Dogs in their Will.

Andrew Garde	Esma Ellard	Joyce Thornton	Richard Wigington
Archibald Manthorpe	Florence Myles	Karel Krepela	Robert Eyles
Audrey Barnard	Foomiya Mellick	Kenneth Preston	Robert Poncho
Barbara Fremlin	Frederick Chitty	Kevin Clark	Kevin Cullen
Betty Payne	Gary Goodwin	Ronald Cullen	Ronald Whitfield
Betty Ward	Graham Stokes	Lawrence McAuliffe	Rosa Leckie
Brian Groves	Gwendolyne	Lisa Macdonald	Rosemary Jones
Brian Harris	Silversmith	Lisa Pollard	Ruby Halloran
Charles Reeve	Heather Grebert	Margaret Hodgson	Ruth Yates
Christina Poacher	Horst Scholz	Mary Finney	Shirley Gillespie
Clyde Petzer	Iris Mackenzie	Maryna Lear	Shirley Wood
Dany Ferrand	Jack Hickmott	Maureen Machin	Sylvia Penketh
Daphne Barber	Janet Johnson	Maxwell Lennon	Theresa Stanton
Daphne McLaughlin	Jean Rowan	Melda Markwell	Therese Kajewski
Dawn Gerns	Jill Milward	Michael Spencer	Valma McLean
Deanna Selle	John Barnes	Miriam Wiener	Valmai Moses
Dorothy Jenkins	John Fry	Nada Walter	William Cooke
Edgar Telford	John Pearce	Nola Stokes	William Fischer
Enid Warren	Joyce Lewis	Norma Walker	



Pictured: Wall of Remembrance plaques in the Memorial Garden

# A legacy that lives on

Known for their warmth, commitment to giving back to their community, and a deep love for dogs, Terry and Ellie Dean have quietly supported Guide Dogs Queensland for more than 20 years.

Ellie, awarded the Medal of the Order of Australia for her service, and Terry, a beloved member of the Rockhampton Orchid Society, dedicated their lives to helping others thrive. At home, their golden retriever Goldie was never far from their side, and dogs had always been a special part of their lives together.

As loyal supporters of Guide Dogs Queensland for over two decades, Terry and Ellie had confirmed their intention to leave



Pictured: Beverly with puppy during a visit to the nursery in 2025



Pictured: Ellie and Terry with their prize winning orchids

a gift in their Wills. This act of generosity will last a lifetime, and is now changing lives, supporting the next generation of Guide Dogs and empowering Queenslanders with low vision and blindness to live with confidence and independence.

In a touching tribute, one of our newest puppies has been named Terrence, in honour of Terry. As little Terrence begins his journey, he carries forward a legacy built on love, loyalty and the quiet power of kindness.

We are deeply grateful to Terry’s sister Beverley for allowing us to share their story and helping their legacy continue to inspire.

“Terry and Ellie were both leaders and very inspirational in their chosen professions and their hobby of orchid growing,” said Beverley. “They were also very avid dog lovers... they would be proud of Terrence, leading the way paw by paw.”

”



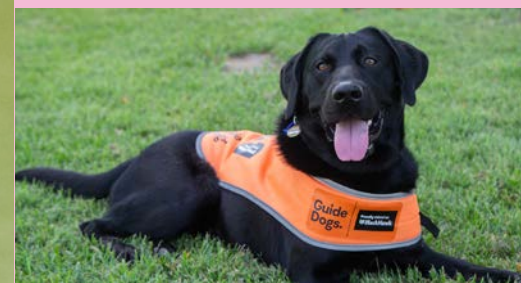
Scan here  
to become  
a Puppy Pal



# Puppy Pals

By joining the Puppy Pals program, you give puppies the best possible start as they work to change lives. When you become a Puppy Pal, you join a community of dog lovers supporting a litter of pups born to become Guide Dogs.

*By closely following their journey, side by side, every step of the way, your regular donations go towards supporting all our puppies in their development.*



**2,144**

nights spent in the loving care of volunteer families

**36**

Nylabones later,  
and still chewing



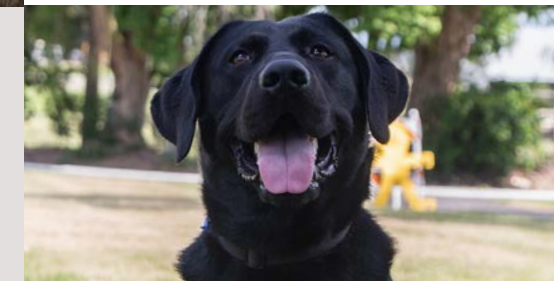
**17,472**

potty breaks



**1,080KG**

of food happily devoured



**309+**

of paws-on  
dog training



**65**

vet checkups to  
keep tails wagging

**Thank you once again for your un-fur-gettable support!**

Your kindness, generosity and walking with us, side by side, on our mission to support people living with low vision or blindness, is so greatly appreciated.

Thanks to you, the U Litter pups got the best possible start on their journey – and your support has been a guiding paw every step of the way.



*Pictured: M Litter trying on their first harnesses*

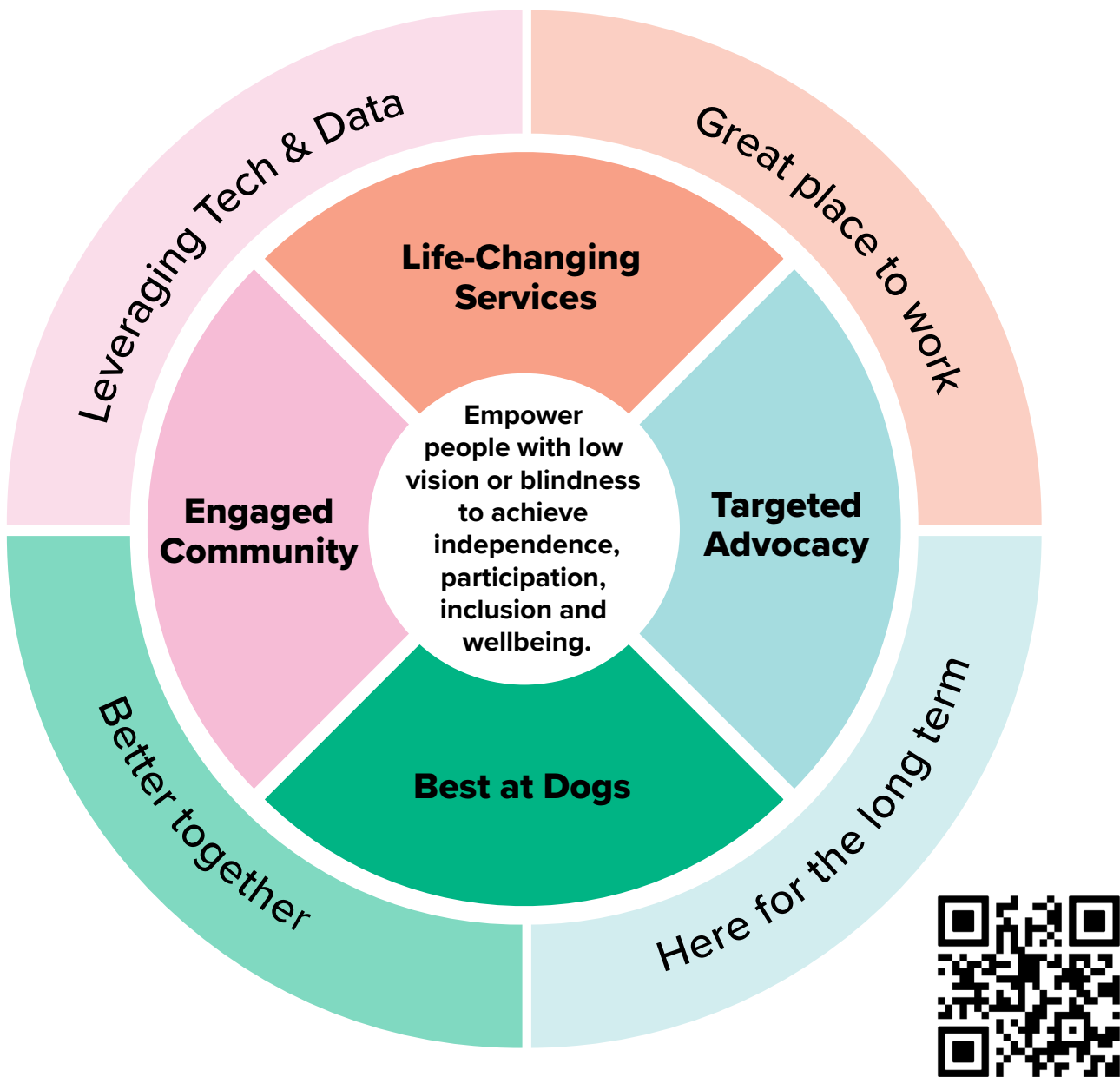


# Strategy Framework

## 2024 – 2030

Guide Dogs Queensland’s 2024-2030 Strategic Plan outlines a framework that aims to enhance the lives of people with low vision or blindness through targeted initiatives across four key pillars: **Life-Changing Services, Best at Dogs, Engaged Community and Targeted Advocacy**. By implementing initiatives across the four pillars, such as expanding our program to include Assistance Dogs and advocating for more accessible businesses, we ensure continued progress toward this strategy framework.

This strategic plan drives our commitment to delivering world-class services, expanding regional and remote support to go where we are needed, fostering innovation, commitment and fostering meaningful connections, and influencing key policy frameworks to create a more accessible, inclusive society. Each pillar is designed to strengthen our ability to meet the evolving needs of our Clients while ensuring sustainable growth and impact.



## Life-Changing Services

- ▶ Enhance impactful outcomes
- ▶ Broaden our Clientele
- ▶ Go where needed

## Targeted Advocacy

- ▶ Influence key policy & regulatory frameworks
- ▶ Promote more accessible businesses, workplaces & communities

## Best at Dogs

- ▶ Strive for a world-class Guide Dog program
- ▶ Diversify into complementary Assistance and Therapy Dogs

## Engaged Community

- ▶ Strengthen the commitment of our donors and volunteers
- ▶ Create exceptional experiences
- ▶ Foster meaningful connections



# Abridged financial statements

Consolidated Statement of Profit or Loss and Other Comprehensive Income  
For the year ended 30 June 2025

	2025 \$			2024 \$		
	INCOME	EXPENSES	NET	INCOME	EXPENSES	NET
<b>Fundraising</b>	<b>20,476,410</b>	<b>10,103,814</b>	<b>10,372,596</b>	<b>14,595,532</b>	<b>9,087,392</b>	<b>5,508,140</b>
<b>Services</b>						
Client services	930,835	4,806,756	(3,875,921)	816,302	4,258,603	(3,442,301)
Guide Dog services & supply	1,056,821	6,337,206	(5,280,385)	1,188,462	6,228,228	(5,039,766)
	<b>1,987,656</b>	<b>11,143,962</b>	<b>(9,156,306)</b>	<b>2,004,764</b>	<b>10,486,831</b>	<b>(8,482,067)</b>
<b>Other</b>						
Dividends & interest	735,205	80,970	654,235	791,138	88,770	702,368
Other	11,327	2,177	9,150	11,180	7,461	3,719
(Loss)/gain on financial assets at fair value through profit or loss	-	29,308	(29,308)	368,078	-	368,078
Gain on sale of non-current assets	21,751	-	21,751	35,911	-	35,911
	<b>768,283</b>	<b>112,455</b>	<b>655,828</b>	<b>1,206,307</b>	<b>96,231</b>	<b>1,110,076</b>
<b>Surplus/(deficit) before income tax</b>			1,872,118			(1,863,851)
Income tax expense			-			-
<b>Surplus/(deficit) for the year</b>			1,872,118			<b>(1,863,851)</b>
<b>Other comprehensive income</b>						
Changes in the fair value of debt instruments at fair value through other comprehensive income			14,268			44,808
<b>Other comprehensive income for the year</b>			<b>14,268</b>			<b>44,808</b>
<b>Total comprehensive income/(loss) for the year</b>			<b>1,886,386</b>			<b>(1,819,043)</b>

These figures have been extracted from the annual financial report, which is available on our website at [guidedogsqld.com.au](http://guidedogsqld.com.au). The annual financial report was given an unqualified opinion by our auditors.

Consolidated Statement of Financial Position  
As at 30 June 2025

	2024 \$
<b>Current assets</b>	
Cash and cash equivalents	2,391,210
Trade and other receivables	947,024
Inventories	2,098,090
<b>Total current assets</b>	<b>5,436,324</b>
<b>Non-current assets</b>	
Property, plant and equipment	5,830,089
Intangible assets	96,397
Right of use assets	554,895
Investments	11,819,914
<b>Total non-current assets</b>	<b>18,301,295</b>
<b>Total assets</b>	<b>23,737,619</b>
<b>Current liabilities</b>	
Trade and other payables	1,063,814
Employee provisions	1,289,814
Lease liabilities	144,230
Other liabilities	495,002
<b>Total current liabilities</b>	<b>2,992,860</b>
<b>Non-current liabilities</b>	
Employee provisions	97,023
Lease liability	422,816
<b>Total non-current liabilities</b>	<b>519,839</b>
<b>Total liabilities</b>	<b>3,512,699</b>
<b>Net assets</b>	<b>20,224,920</b>
<b>Equity</b>	
Retained surplus	20,139,873
Reserve	85,047
<b>Total equity</b>	<b>20,224,920</b>

These figures have been extracted from the annual financial report, which are available on our website at [guidedogsqld.com.au](http://guidedogsqld.com.au). The annual financial report was given an unqualified opinion by our auditors.





# Guide Dogs.

1978 Gympie Road Bald Hills Qld 4036  
Freecall 1800 810 122  
[guidedogsqld.com.au](http://guidedogsqld.com.au)  
ABN 89 009 739 664

